

IN THE DISTRICT COURT OF THE FIFTH JUDICIAL DISTRICT OF THE
STATE OF IDAHO, IN AND FOR THE COUNTY OF TWIN FALLS

In Re CSRBA) PARTIAL DECREE PURSUANT TO I.R.C.P. 54(b)
Case No. 49576) FOR FEDERAL RESERVED
)
) WATER RIGHT NO. 91-07932

NAME AND ADDRESS: UNITED STATES OF AMERICA ACTING THROUGH
USDA FOREST SERVICE
550 W FORT ST MSC 033
BOISE ID 83724

SOURCE: See Attachment 1, Column A TRIBUTARY: See Attachment 1, Column B

Sources are located on National Forest System Land in the Bacon Creek-St. Joe River subwatershed (HUC12 170103040102).

QUANTITY: The amount of water necessary to control and suppress forest fires.

PRIORITY DATE: 11/06/1906

POINT OF DIVERSION: See Attachment 1, Columns C through G

PURPOSE AND PERIOD OF USE:

<u>PURPOSE OF USE</u>	<u>PERIOD OF USE</u>
Administrative-Fire Suppression	01/01 - 12/31

PLACE OF USE: National Forests in Idaho and the Kaniksu, Lolo and Kootenai National Forests in Montana.

See Attachment 2.

OTHER PROVISIONS NECESSARY FOR DEFINITION OR ADMINISTRATION OF THIS WATER RIGHT:

This right is limited to the intermittent diversion and use of water for the purpose of suppressing wildfires. This water right shall not be used as a basis to prevent the future appropriation of water.

This partial decree is subject to such general provisions necessary for the definition of the rights or for the efficient administration of the water rights as may be ultimately determined by the Court at a point in time no later than the entry of a final unified decree. Idaho Code § 42-1412(6).

RULE 54(b) CERTIFICATE

With respect to the issues determined by the above partial judgment it is hereby CERTIFIED, in accordance with Rule 54(b), I.R.C.P., that the court has determined that there is no just reason for delay of the entry of a final judgment and that the court has and does hereby direct that the above partial judgment is a final judgment upon which execution may issue and an appeal may be taken as provided by the Idaho Appellate Rules.

Eric J. Wildman
Presiding Judge of the
Coeur d'Alene-Spokane River Adjudication

Attachment 1

	A	B	C	D	E	F	G
001	SOURCE NAME	TO TRIBUTARY	TOWNSHIP	RANGE	SECTION	QQ	SURVEY CODE AND NUMBER
002	St Joe River	Coeur d'Alene Lake	42N	09E	01		
003	Unnamed Stream	St Joe River	42N	09E	01		
004	Unnamed Stream	St Joe River	42N	09E	01		
005	Unnamed Stream	St Joe River	42N	09E	01		
006	Unnamed Stream	St Joe River	42N	09E	01		
007	Needle Creek	St Joe River	42N	09E	02		
008	Unnamed Stream	Broken Leg Creek	42N	09E	02		
009	Unnamed Stream	Broken Leg Creek	42N	09E	02		
010	Unnamed Stream	Needle Creek	42N	09E	02		
011	Broken Leg Creek	St Joe River	42N	09E	03		
012	Unnamed Stream	Broken Leg Creek	42N	09E	03		
013	Unnamed Stream	Broken Leg Creek	42N	09E	03		
014	Unnamed Stream	Broken Leg Creek	42N	09E	03		
015	Unnamed Stream	Broken Leg Creek	42N	09E	03		
016	Unnamed Stream	Broken Leg Creek	42N	09E	03		
017	Unnamed Stream	Broken Leg Creek	42N	09E	03		
018	Unnamed Stream	Broken Leg Creek	42N	09E	03		
019	Unnamed Stream	Broken Leg Creek	42N	09E	03		
020	Unnamed Stream	Broken Leg Creek	42N	09E	03		
021	Unnamed Stream	Broken Leg Creek	42N	09E	03		
022	Unnamed Stream	Broken Leg Creek	42N	09E	03		
023	Unnamed Stream	Broken Leg Creek	42N	09E	03		
024	Unnamed Stream	Broken Leg Creek	42N	09E	04		
025	Unnamed Stream	Broken Leg Creek	42N	09E	04		
026	Unnamed Stream	Broken Leg Creek	42N	09E	04		
027	Unnamed Stream	Broken Leg Creek	42N	09E	04		
028	Unnamed Stream	Broken Leg Creek	42N	09E	04		
029	Unnamed Stream	St Joe River	42N	09E	08		

Attachment 1

	A	B	C	D	E	F	G
001	SOURCE NAME	TO TRIBUTARY	TOWNSHIP	RANGE	SECTION	QQ	SURVEY CODE AND NUMBER
030	St Joe River	Coeur d'Alene Lake	42N	09E	09		
031	Unnamed Stream	St Joe River	42N	09E	09		
032	Unnamed Stream	St Joe River	42N	09E	09		
033	Unnamed Stream	St Joe River	42N	09E	09		
034	Unnamed Stream	St Joe River	42N	09E	09		
035	Unnamed Stream	St Joe River	42N	09E	09		
036	Unnamed Stream	St Joe River	42N	09E	09		
037	Unnamed Stream	St Joe River	42N	09E	09		
038	Unnamed Stream	St Joe River	42N	09E	09		
039	Broken Leg Creek	St Joe River	42N	09E	10		
040	St Joe River	Coeur d'Alene Lake	42N	09E	10		
041	Unnamed Stream	Broken Leg Creek	42N	09E	10		
042	Unnamed Stream	Broken Leg Creek	42N	09E	10		
043	Unnamed Stream	St Joe River	42N	09E	10		
044	Unnamed Stream	St Joe River	42N	09E	10		
045	Unnamed Stream	St Joe River	42N	09E	10		
046	Unnamed Stream	St Joe River	42N	09E	10		
047	Unnamed Stream	St Joe River	42N	09E	10		
048	Unnamed Stream	St Joe River	42N	09E	10		
049	Unnamed Stream	St Joe River	42N	09E	10		
050	Forage Creek	St Joe River	42N	09E	11		
051	Myrtle Creek	St Joe River	42N	09E	11		
052	Needle Creek	St Joe River	42N	09E	11		
053	St Joe River	Coeur d'Alene Lake	42N	09E	11		
054	Unnamed Stream	Forage Creek	42N	09E	11		
055	Unnamed Stream	St Joe River	42N	09E	11		
056	Unnamed Stream	St Joe River	42N	09E	11		
057	Bean Creek	St Joe River	42N	09E	12		

Attachment 1

	A	B	C	D	E	F	G
001	SOURCE NAME	TO TRIBUTARY	TOWNSHIP	RANGE	SECTION	QQ	SURVEY CODE AND NUMBER
058	Forage Creek	St Joe River	42N	09E	12		
059	St Joe River	Coeur d'Alene Lake	42N	09E	12		
060	Unnamed Stream	Bean Creek	42N	09E	12		
061	Unnamed Stream	Forage Creek	42N	09E	12		
062	Unnamed Stream	Forage Creek	42N	09E	12		
063	Unnamed Stream	Forage Creek	42N	09E	12		
064	Unnamed Stream	Forage Creek	42N	09E	12		
065	Unnamed Stream	Forage Creek	42N	09E	12		
066	Unnamed Stream	Forage Creek	42N	09E	12		
067	Dump Creek	Bean Creek	42N	09E	13		
068	Forage Creek	St Joe River	42N	09E	13		
069	Unnamed Stream	Forage Creek	42N	09E	13		
070	Unnamed Stream	Forage Creek	42N	09E	13		
071	Unnamed Stream	Forage Creek	42N	09E	13		
072	Bacon Creek	St Joe River	42N	09E	14		
073	Myrtle Creek	St Joe River	42N	09E	14		
074	Unnamed Stream	Bacon Creek	42N	09E	14		
075	Unnamed Stream	Bacon Creek	42N	09E	14		
076	Unnamed Stream	Bacon Creek	42N	09E	14		
077	Unnamed Stream	St Joe River	42N	09E	14		
078	Bacon Creek	St Joe River	42N	09E	15		
079	Unnamed Stream	Bacon Creek	42N	09E	15		
080	Unnamed Stream	Bacon Creek	42N	09E	15		
081	Unnamed Stream	Bacon Creek	42N	09E	15		
082	Unnamed Stream	Bacon Creek	42N	09E	15		
083	Unnamed Stream	St Joe River	42N	09E	15		
084	Unnamed Stream	St Joe River	42N	09E	15		
085	Unnamed Stream	St Joe River	42N	09E	15		

Attachment 1

	A	B	C	D	E	F	G
001	SOURCE NAME	TO TRIBUTARY	TOWNSHIP	RANGE	SECTION	QQ	SURVEY CODE AND NUMBER
086	Unnamed Stream	St Joe River	42N	09E	15		
087	Bacon Creek	St Joe River	42N	09E	16		
088	Pass Creek	Bacon Creek	42N	09E	16		
089	St Joe River	Coeur d'Alene Lake	42N	09E	16		
090	Unnamed Stream	Bacon Creek	42N	09E	16		
091	Unnamed Stream	Bacon Creek	42N	09E	16		
092	Unnamed Stream	St Joe River	42N	09E	16		
093	Unnamed Stream	St Joe River	42N	09E	16		
094	Unnamed Stream	St Joe River	42N	09E	16		
095	Unnamed Stream	St Joe River	42N	09E	16		
096	Unnamed Stream	St Joe River	42N	09E	16		
097	Unnamed Stream	St Joe River	42N	09E	16		
098	St Joe River	Coeur d'Alene Lake	42N	09E	17		
099	Unnamed Stream	Bacon Creek	42N	09E	17		
100	Unnamed Stream	St Joe River	42N	09E	17		
101	Unnamed Stream	St Joe River	42N	09E	17		
102	Unnamed Stream	St Joe River	42N	09E	17		
103	Unnamed Stream	St Joe River	42N	09E	17		
104	Unnamed Stream	St Joe River	42N	09E	17		
105	Unnamed Stream	St Joe River	42N	09E	17		
106	St Joe River	Coeur d'Alene Lake	42N	09E	18		
107	Unnamed Stream	St Joe River	42N	09E	18		
108	Pass Creek	Bacon Creek	42N	09E	20		
109	Unnamed Stream	Bacon Creek	42N	09E	20		
110	Unnamed Stream	Pass Creek	42N	09E	20		
111	Unnamed Stream	Pass Creek	42N	09E	20		
112	Unnamed Stream	St Joe River	42N	09E	20		
113	Unnamed Stream	St Joe River	42N	09E	20		

Attachment 1

	A	B	C	D	E	F	G
001	SOURCE NAME	TO TRIBUTARY	TOWNSHIP	RANGE	SECTION	QQ	SURVEY CODE AND NUMBER
114	Unnamed Stream	St Joe River	42N	09E	20		
115	Unnamed Stream	St Joe River	42N	09E	20		
116	Pass Creek	Bacon Creek	42N	09E	21		
117	Unnamed Stream	Bacon Creek	42N	09E	21		
118	Unnamed Stream	Pass Creek	42N	09E	21		
119	Unnamed Stream	Pass Creek	42N	09E	21		
120	Unnamed Stream	Pass Creek	42N	09E	21		
121	Unnamed Stream	Pass Creek	42N	09E	21		
122	Unnamed Stream	Pass Creek	42N	09E	21		
123	Unnamed Stream	Pass Creek	42N	09E	21		
124	Bacon Creek	St Joe River	42N	09E	22		
125	Basin Creek	Bacon Creek	42N	09E	22		
126	Unnamed Stream	Bacon Creek	42N	09E	22		
127	Unnamed Stream	Basin Creek	42N	09E	22		
128	Unnamed Stream	Basin Creek	42N	09E	22		
129	Unnamed Stream	Basin Creek	42N	09E	22		
130	Unnamed Stream	Basin Creek	42N	09E	22		
131	Bacon Creek	St Joe River	42N	09E	23		
132	Unnamed Stream	Bacon Creek	42N	09E	23		
133	Unnamed Stream	Bacon Creek	42N	09E	23		
134	Unnamed Stream	Bacon Creek	42N	09E	23		
135	Unnamed Stream	Basin Creek	42N	09E	23		
136	Unnamed Stream	Basin Creek	42N	09E	23		
137	Unnamed Stream	Basin Creek	42N	09E	23		
138	Unnamed Stream	Basin Creek	42N	09E	23		
139	Bacon Creek	St Joe River	42N	09E	24		
140	Unnamed Stream	Bacon Creek	42N	09E	24		
141	Unnamed Stream	Bacon Creek	42N	09E	24		

Attachment 1

	A	B	C	D	E	F	G
001	SOURCE NAME	TO TRIBUTARY	TOWNSHIP	RANGE	SECTION	QQ	SURVEY CODE AND NUMBER
142	Bacon Creek	St Joe River	42N	09E	25		
143	Unnamed Stream	Bacon Creek	42N	09E	25		
144	Unnamed Stream	Bacon Creek	42N	09E	25		
145	Unnamed Stream	Bacon Creek	42N	09E	25		
146	Basin Creek	Bacon Creek	42N	09E	26		
147	Unnamed Stream	Bacon Creek	42N	09E	26		
148	Unnamed Stream	Bacon Creek	42N	09E	26		
149	Unnamed Stream	Basin Creek	42N	09E	26		
150	Unnamed Stream	Basin Creek	42N	09E	26		
151	Unnamed Stream	Basin Creek	42N	09E	26		
152	Unnamed Stream	Basin Creek	42N	09E	26		
153	Unnamed Stream	Basin Creek	42N	09E	26		
154	Basin Creek	Bacon Creek	42N	09E	27		
155	Unnamed Stream	Basin Creek	42N	09E	27		
156	Unnamed Stream	Basin Creek	42N	09E	27		
157	Unnamed Stream	Basin Creek	42N	09E	27		
158	Unnamed Stream	Basin Creek	42N	09E	27		
159	Unnamed Stream	Basin Creek	42N	09E	27		
160	Unnamed Stream	Basin Creek	42N	09E	28		
161	Unnamed Stream	Basin Creek	42N	09E	28		
162	Unnamed Stream	Pass Creek	42N	09E	28		
163	Unnamed Stream	Pass Creek	42N	09E	28		
164	Unnamed Stream	Pass Creek	42N	09E	29		
165	Unnamed Stream	Basin Creek	42N	09E	35		
166	Unnamed Stream	Basin Creek	42N	09E	35		
167	Unnamed Stream	Basin Creek	42N	09E	35		
168	North Fork Bean Creek	Bean Creek	42N	10E	03		
169	North Fork Bean Creek	Bean Creek	42N	10E	04		

Attachment 1

	A	B	C	D	E	F	G
001	SOURCE NAME	TO TRIBUTARY	TOWNSHIP	RANGE	SECTION	QQ	SURVEY CODE AND NUMBER
170	Unnamed Stream	North Fork Bean Creek	42N	10E	04		
171	Unnamed Stream	North Fork Bean Creek	42N	10E	04		
172	Unnamed Stream	North Fork Bean Creek	42N	10E	04		
173	Unnamed Stream	North Fork Bean Creek	42N	10E	04		
174	Unnamed Stream	North Fork Bean Creek	42N	10E	04		
175	Bean Creek	St Joe River	42N	10E	05		
176	North Fork Bean Creek	Bean Creek	42N	10E	05		
177	Unnamed Stream	Bean Creek	42N	10E	05		
178	Unnamed Stream	North Fork Bean Creek	42N	10E	05		
179	Unnamed Stream	North Fork Bean Creek	42N	10E	05		
180	Bean Creek	St Joe River	42N	10E	06		
181	Unnamed Stream	Bean Creek	42N	10E	06		
182	Unnamed Stream	Bean Creek	42N	10E	06		
183	Unnamed Stream	Bean Creek	42N	10E	06		
184	Unnamed Stream	Bean Creek	42N	10E	06		
185	Unnamed Stream	Bean Creek	42N	10E	06		
186	Unnamed Stream	Bean Creek	42N	10E	06		
187	Unnamed Stream	St Joe River	42N	10E	06		
188	Unnamed Stream	St Joe River	42N	10E	06		
189	Unnamed Stream	St Joe River	42N	10E	06		
190	Unnamed Stream	St Joe River	42N	10E	06		
191	Bean Creek	St Joe River	42N	10E	07		
192	Dump Creek	Bean Creek	42N	10E	07		
193	Unnamed Stream	Bean Creek	42N	10E	07		
194	Unnamed Stream	Bean Creek	42N	10E	07		
195	Unnamed Stream	Bean Creek	42N	10E	07		
196	Unnamed Stream	Bean Creek	42N	10E	07		
197	Unnamed Stream	Dump Creek	42N	10E	07		

Attachment 1

	A	B	C	D	E	F	G
001	SOURCE NAME	TO TRIBUTARY	TOWNSHIP	RANGE	SECTION	QQ	SURVEY CODE AND NUMBER
198	Unnamed Stream	Forage Creek	42N	10E	07		
199	Bean Creek	St Joe River	42N	10E	08		
200	Mill Creek	Tinear Creek	42N	10E	08		
201	North Fork Bean Creek	Bean Creek	42N	10E	08		
202	Tinear Creek	Bean Creek	42N	10E	08		
203	Bean Creek	St Joe River	42N	10E	09		
204	Unnamed Stream	Bean Creek	42N	10E	09		
205	Bean Creek	St Joe River	42N	10E	10		
206	Bean Creek	St Joe River	42N	10E	15		
207	Bean Creek	St Joe River	42N	10E	16		
208	Mill Creek	Tinear Creek	42N	10E	16		
209	Unnamed Stream	Bean Creek	42N	10E	16		
210	Mill Creek	Tinear Creek	42N	10E	17		
211	Tinear Creek	Bean Creek	42N	10E	17		
212	Unnamed Stream	Mill Creek	42N	10E	17		
213	Unnamed Stream	Tinear Creek	42N	10E	17		
214	Unnamed Stream	Tinear Creek	42N	10E	17		
215	Dump Creek	Bean Creek	42N	10E	18		
216	Unnamed Stream	Dump Creek	42N	10E	18		
217	Unnamed Stream	Tinear Creek	42N	10E	18		
218	Tinear Creek	Bean Creek	42N	10E	19		
219	Unnamed Stream	Tinear Creek	42N	10E	19		
220	Unnamed Stream	Tinear Creek	42N	10E	19		
221	Unnamed Stream	Tinear Creek	42N	10E	19		
222	Unnamed Stream	Tinear Creek	42N	10E	19		
223	Tinear Creek	Bean Creek	42N	10E	20		
224	Unnamed Stream	Tinear Creek	42N	10E	20		
225	Mill Creek	Tinear Creek	42N	10E	21		

Attachment 1

	A	B	C	D	E	F	G
001	SOURCE NAME	TO TRIBUTARY	TOWNSHIP	RANGE	SECTION	QQ	SURVEY CODE AND NUMBER
226	Tinear Creek	Bean Creek	42N	10E	30		
227	Aqua Creek	St Joe River	43N	09E	25		
228	St Joe River	Coeur d'Alene Lake	43N	09E	25		
229	Unnamed Stream	Aqua Creek	43N	09E	25		
230	Unnamed Stream	Aqua Creek	43N	09E	25		
231	Unnamed Stream	Aqua Creek	43N	09E	25		
232	Unnamed Stream	St Joe River	43N	09E	25		
233	Unnamed Stream	St Joe River	43N	09E	25		
234	Unnamed Stream	St Joe River	43N	09E	25		
235	Unnamed Stream	St Joe River	43N	09E	25		
236	Unnamed Stream	St Joe River	43N	09E	25		
237	Unnamed Stream	St Joe River	43N	09E	25		
238	Unnamed Stream	St Joe River	43N	09E	25		
239	Unnamed Stream	St Joe River	43N	09E	25		
240	Broken Leg Creek	St Joe River	43N	09E	34		
241	Unnamed Stream	Broken Leg Creek	43N	09E	34		
242	Needle Creek	St Joe River	43N	09E	35		
243	Unnamed Stream	Needle Creek	43N	09E	35		
244	Unnamed Stream	Needle Creek	43N	09E	35		
245	Unnamed Stream	Needle Creek	43N	09E	35		
246	Unnamed Stream	Needle Creek	43N	09E	35		
247	Unnamed Stream	Needle Creek	43N	09E	35		
248	Unnamed Stream	Needle Creek	43N	09E	35		
249	Aqua Creek	St Joe River	43N	09E	36		
250	St Joe River	Coeur d'Alene Lake	43N	09E	36		
251	Unnamed Stream	Aqua Creek	43N	09E	36		
252	Unnamed Stream	Aqua Creek	43N	09E	36		
253	Unnamed Stream	Aqua Creek	43N	09E	36		

Attachment 1




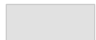

	A	B	C	D	E	F	G
001	SOURCE NAME	TO TRIBUTARY	TOWNSHIP	RANGE	SECTION	QQ	SURVEY CODE AND NUMBER
254	Unnamed Stream	St Joe River	43N	09E	36		
255	Unnamed Stream	St Joe River	43N	09E	36		
256	Unnamed Stream	St Joe River	43N	09E	36		
257	Unnamed Stream	St Joe River	43N	09E	36		
258	Unnamed Stream	St Joe River	43N	09E	36		
259	Unnamed Stream	St Joe River	43N	10E	19		
260	Unnamed Stream	St Joe River	43N	10E	19		
261	Unnamed Stream	St Joe River	43N	10E	19		
262	Unnamed Stream	St Joe River	43N	10E	19		
263	Unnamed Stream	St Joe River	43N	10E	19		
264	Unnamed Stream	St Joe River	43N	10E	19		
265	Ascent Creek	St Joe River	43N	10E	29		
266	Unnamed Stream	Ascent Creek	43N	10E	29		
267	Unnamed Stream	Ascent Creek	43N	10E	29		
268	Ascent Creek	St Joe River	43N	10E	30		
269	St Joe River	Coeur d'Alene Lake	43N	10E	30		
270	Unnamed Stream	St Joe River	43N	10E	30		
271	Unnamed Stream	St Joe River	43N	10E	30		
272	Unnamed Stream	St Joe River	43N	10E	30		
273	Unnamed Stream	St Joe River	43N	10E	30		
274	Unnamed Stream	St Joe River	43N	10E	30		
275	Unnamed Stream	St Joe River	43N	10E	30		
276	Unnamed Stream	St Joe River	43N	10E	30		
277	Unnamed Stream	St Joe River	43N	10E	30		
278	Unnamed Stream	St Joe River	43N	10E	30		
279	Unnamed Stream	St Joe River	43N	10E	30		
280	St Joe River	Coeur d'Alene Lake	43N	10E	31		
281	Unnamed Stream	St Joe River	43N	10E	31		

Attachment 1

	A	B	C	D	E	F	G
001	SOURCE NAME	TO TRIBUTARY	TOWNSHIP	RANGE	SECTION	QQ	SURVEY CODE AND NUMBER
282	Unnamed Stream	St Joe River	43N	10E	31		
283	Unnamed Stream	St Joe River	43N	10E	31		
284	Ascent Creek	St Joe River	43N	10E	32		
285	Unnamed Stream	Ascent Creek	43N	10E	32		
286	Unnamed Stream	Ascent Creek	43N	10E	32		
287	Unnamed Stream	North Fork Bean Creek	43N	10E	32		
288	Unnamed Stream	North Fork Bean Creek	43N	10E	32		
289	Unnamed Stream	North Fork Bean Creek	43N	10E	32		
290	Unnamed Stream	North Fork Bean Creek	43N	10E	33		
291	Forage Lake	Forage Creek	42N	09E	13		
292	Halo Lake	Dump Creek	42N	09E	13		
293	Unnamed Pond	Bacon Creek	42N	09E	23		
294	Bacon Lake	Bacon Creek	42N	09E	24		
295	Halo Lake	Dump Creek	42N	09E	24		
296	Unnamed Pond	Bacon Creek	42N	09E	24		
297	Unnamed Pond	Bacon Creek	42N	09E	25		
298	Unnamed Pond	Sink	42N	09E	25		
299	Unnamed Pond	Basin Creek	42N	09E	26		
300	Unnamed Pond	Basin Creek	42N	09E	26		
301	Unnamed Pond	Basin Creek	42N	09E	35		
302	Halo Lake	Dump Creek	42N	10E	18		
303	Unnamed Pond	Dump Creek	42N	10E	18		
304	Unnamed Pond	Sink	42N	10E	19		
305	Unnamed Pond	Sink	42N	10E	19		
306	Unnamed Pond	Tinear Creek	42N	10E	30		

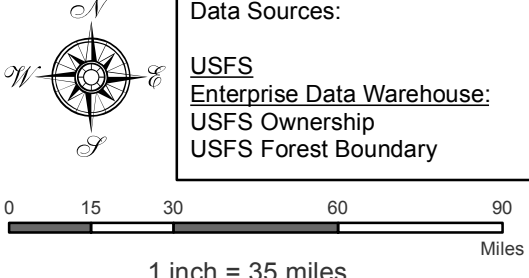
Attachment 2
 Place of Use Map Fire Suppression - Water Right No. 91-07932
 National Forests in Idaho and the Kaniksu, Lolo and Kootenai NF in Montana

Key to Features

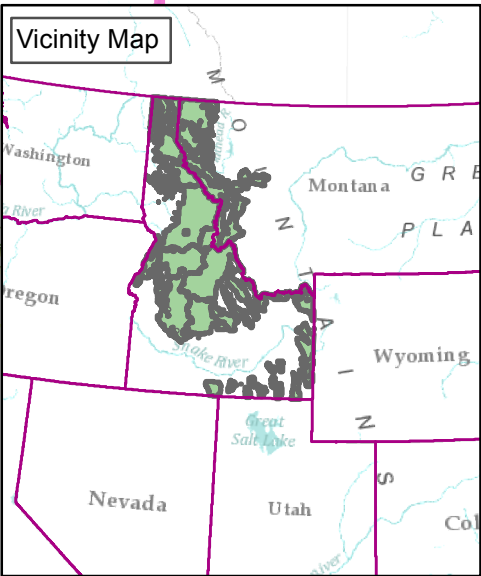
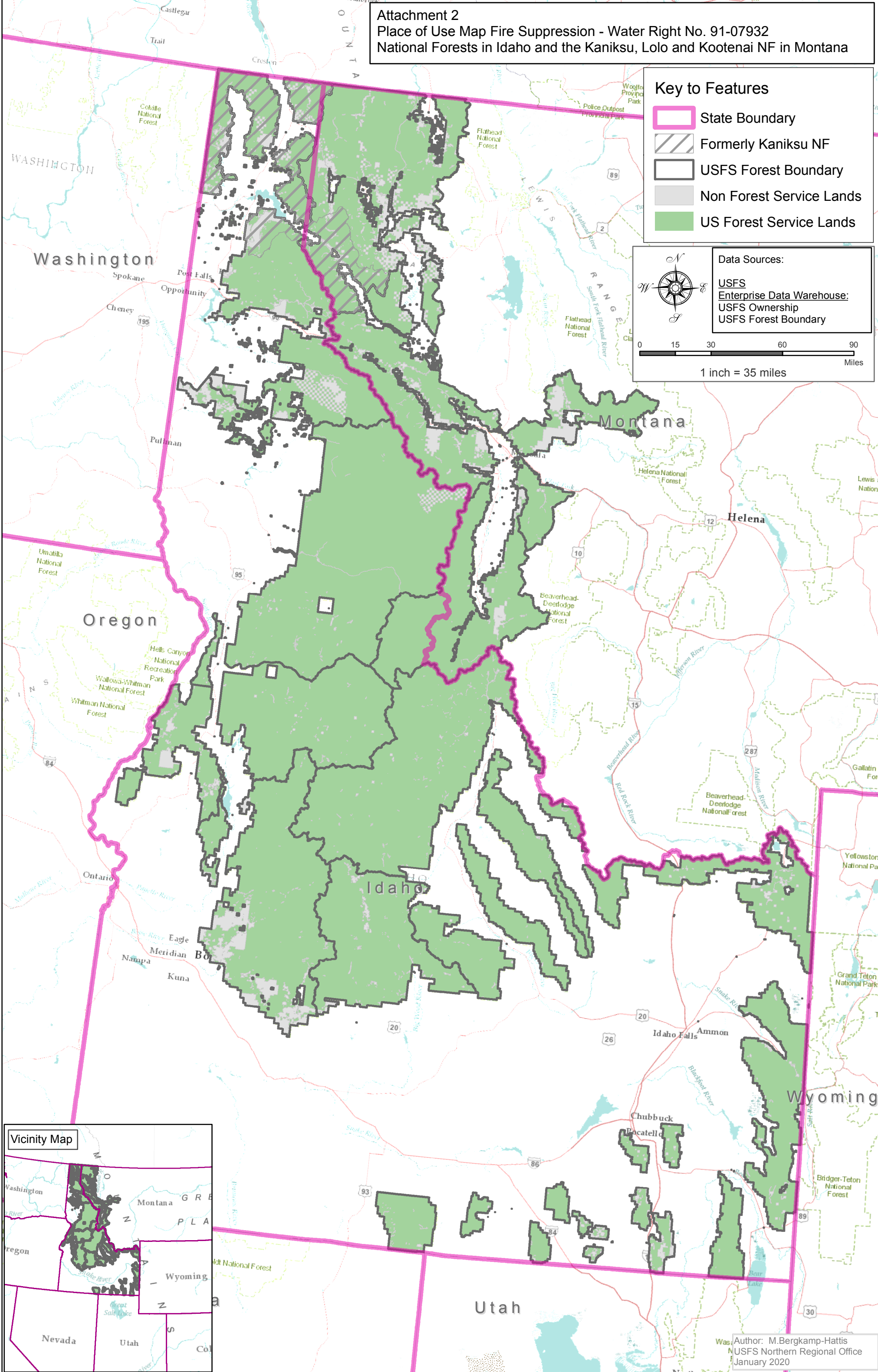
-  State Boundary
-  Formerly Kaniksu NF
-  USFS Forest Boundary
-  Non Forest Service Lands
-  US Forest Service Lands

Data Sources:

- USFS
- Enterprise Data Warehouse:
- USFS Ownership
- USFS Forest Boundary



0 15 30 60 90 Miles
 1 inch = 35 miles



Author: M.Bergkamp-Hattis
 USFS Northern Regional Office
 January 2020